



Telelogic Rhapsody System Architect

Today's embedded systems development teams are challenged to deliver complex functionality in less time, and with fewer resources. Telelogic recognizes the need for systems engineers to communicate more effectively and get the design functionally correct by introducing a product aimed at meeting these needs — Telelogic Rhapsody System Architect.

Rhapsody System Architect™ is a state-of-the-art, integrated visual modeling environment for complex system engineering projects. It uses the Object Modeling Group's System Modeling Language (SysML™) version 1.0 and Unified Modeling Language (UML®) version 2.0 to allow systems engineers to quickly specify requirements and design. Furthermore, Rhapsody System Architect can be used to show full requirements traceability from the system model back to the requirements. If a requirement is changed, system engineers can quickly see what impact that requirement has had on the system design.

Rhapsody System Architect uses an advanced model browser and data dictionary that allows teams of engineers to quickly sort, organize and edit their models. Opening multiple Rhapsody projects within a single browser is possible. Model elements available in the browser can be used in one diagram or view of the system, and also in multiple diagrams or views. The browser keeps track of all references of model elements ensuring that if a change is made in one view, it is propagated across all views.

Although both the SysML and UML provide a rich set of modeling notations and syntax for systems engineering, they can be further enriched using Rhapsody System Architect's advanced graphics presentation capabilities. Any Rhapsody System Architect SysML or UML diagram can be supplemented with domain specific graphics to maximize the readability of the system design to the largest possible audience. Through Rhapsody System Architect's Model Checker, systems engineers can ensure that the model is correct and consistent across all views.

Rhapsody System Architect models can easily be handed off and opened in Rhapsody Developer™ (C++, C and Java editions). Now, not only can system teams hand off paper-based documentation using Rhapsody System Architect's documentation generation capabilities, they can also hand off the precise system models directly to their software engineering counterparts, thus ensuring no ambiguities in the systems specification.

BENEFITS

- Enables clear, formal and non-ambiguous communication of the system to all stakeholders in the project
- Eases systems handoff to other domains and stakeholders
- Quickly manage and organize changing requirements and their impact on the design and architecture
- Easily communicate systems architecture to a wide audience
- Produce systems documentation quickly and efficiently
- Verify systems designs are statically correct and consistent across all views

FEATURES

- OMG SysML™ 1.0 and UML 2.0 integrated requirements and design modeling environment with Domain Specific Language (DSL) support including DoDAF*.
- Support for user defined graphics within diagrams to enable richer modeling
- Full lifecycle traceability and analysis
- Static model checking analysis
- XMI* and Rose import for legacy system re-use*
- Full Configuration Management interface* support with advanced graphical difference and merging capabilities
- Customizable automatic documentation output

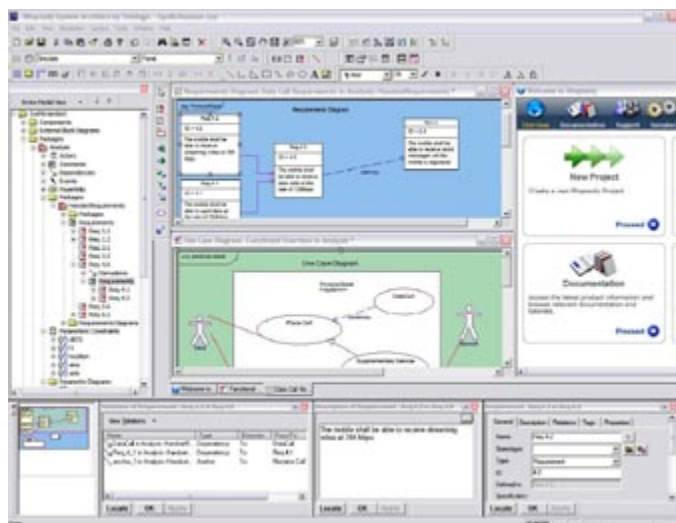
SYSTEMS REQUIREMENTS

- Windows XP and 2000
- Host Minimum CPU: Pentium II 800MHz
- Host Disk Space: Approximately 750 MB (Full Installation)
- Host Memory: Minimum 256 MB RAM, Recommended 512 MB

For the most up-to-date systems requirements, please refer to the release notes for the specific Rhapsody version you are using.

Rhapsody System Architect Specification Highlights

- SysML 1.0 (Requirements, External, Internal, Parametric, Activity, Statechart, Sequence, Use Case Diagram) and UML 2.0 (Activity, Class, Component, Structure, Deployment, Interaction, Package, Sequence, Statechart, Usecase Diagram) visual modeling support
- Advanced graphics support with domain specific modeling
- Full integrated requirements capture and traceability
- Advanced browser with model organizer
- Floating and dockable window support
- DoDAF* modeling support (with additional DoDAF pack)
- Automatic documentation generation
- Static model checking for completeness and consistency
- Base aware visual differencing and merging
- XML* import/export and Rose Import* (with additional add-on packs)
- Configuration Management interface* capabilities (with additional add-on packs)
- Intelliviser helper for trouble-free modeling help
- Support for user defined macros and helpers with specific systems helpers included
- Design exchange between Rhapsody System Architect and Rhapsody Developer (C++, C and Java) with common repository



Rhapsody System Architect is a state of art, integrated visual modeling environment for complex system engineering projects.

Rhapsody System Architect Value Pack Add-Ons

(Capabilities previously marked with * are provided by these optional add-ons)

Rhapsody System Architect may be customized with additional functionality. These include:

- Interfaces Pack: includes the basic DOORS interface for requirements traceability, a CM interface to allow collaborative development with most CM tools, the Rose Importer and XMI
- Tools and Utilities Pack: includes Rhapsody ReporterPLUS™, a highly customizable template based documentation utility, and Webify Toolkit™, a rapid prototyper/model stimulator
- Value Pack: includes the Interfaces Pack and the Tools and Utilities Pack
- Rhapsody Gateway™: includes advanced interface to popular requirements management tools (DOORS, Requisite Pro, CalibreRM) and popular requirements authoring tools (Word, Excel, Powerpoint, PDF)
- Rhapsody Gateway Value Pack: Includes the Value Pack and the Gateway (Note, does not include basic DOORS interface).
- DoDAF Pack: Includes support to allow Rhapsody to create high quality DoDAF product artifacts.

For details, please see the appropriate data sheet and the release notes for the add-on you are interested in.

About Telelogic

Telelogic® is a leading global provider of solutions for automating and supporting best practices across the enterprise — from powerful modeling of business processes and enterprise architectures to requirements-driven development of advanced systems and software. Telelogic’s solutions enable organizations to align product, systems, and software development lifecycles with business objectives and customer needs to dramatically improve quality and predictability, while significantly reducing time-to-market and overall costs.

Visit us at www.telelogic.com for more information.

Global Headquarters

P.O. Box 4128, SE-203 12
Malmö, Sweden
P: + 46 40 650 00 00
F: + 46 40 650 65 55

Americas Headquarters

9401 Jeronimo Road
Irvine, CA 92618 USA
P: + 1 949 830 8022
F: + 1 949 830 8023

Offices across Europe, America, Asia and Australia. Distributors worldwide.

info@telelogic.com
www.telelogic.com